

# THREADED THREE PIECE COUPLINGS

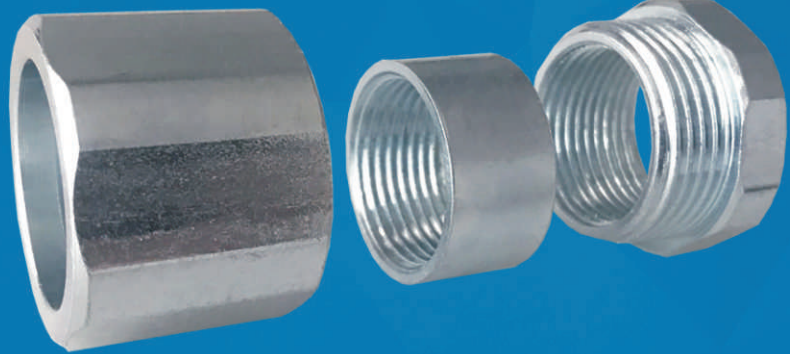
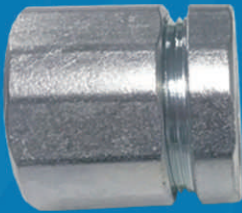
For IMC & Rigid Conduits

## Applications

ELEC MAN® IMC/Rigid three piece couplings are used to couple the two ends of IMC/Rigid when the conduit can not be turned.

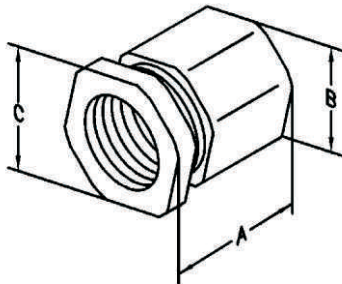
## Features

- All malleable construction insures mechanical protection of the raceway
- Provide concrete-tight connection
- All components are zinc electro plated for corrosion protection



## UNIONES ERICSON

Las roscas que ajustan con el tubo conduit son NPT.



**UL STANDARD: 514B**  
**FED.SPEC. W-F-408E**  
**NEMA:FB-1**

| Cat.#  | Trade Size | DIM   |       |       |
|--------|------------|-------|-------|-------|
|        |            | A     | B     | C     |
| TPC050 | 1/2"       | 1.313 | 1.375 | 1.375 |
| TPC075 | 3/4"       | 1.565 | 1.563 | 1.563 |
| TPC100 | 1"         | 1.625 | 1.875 | 1.875 |
| TPC125 | 1-1/4"     | 2.125 | 2.375 | 2.375 |
| TPC150 | 1-1/2"     | 2.375 | 2.813 | 2.813 |
| TPC200 | 2"         | 2.625 | 3.313 | 3.313 |
| TPC250 | 2-1/2"     | 3.125 | 4.063 | 4.063 |
| TPC300 | 3"         | 3.188 | 4.688 | 4.688 |
| TPC350 | 3-1/2"     | 3.563 | 5.063 | 5.063 |
| TPC400 | 4"         | 4.000 | 5.75  | 5.75  |
| TPC500 | 5"         | 4.000 | 7.25  | 7.25  |
| TPC600 | 6"         | 3.875 | 8.313 | 8.313 |

