

Rigid Connector Set Screw Type

Steel

ELECMAN® steel rigid connector set screw type is a steel fitting that securely attaches rigid or intermediate metal conduit to electrical boxes using set screws. It is commonly used in indoor, dry environments for commercial and industrial electrical installations.

Type:

Set screw type

Material:

Steel

Surface Finish:

Zinc plated

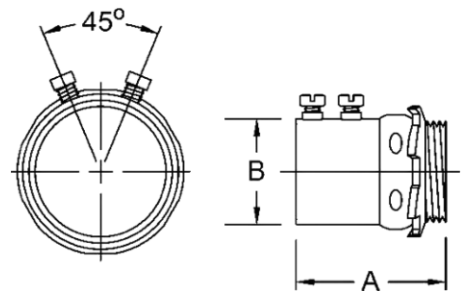
Certification & Standard

Manufactured to Underwriters Laboratory
Safety Standards UL 514B
UL File No.: E513113



Dimensions:

The dimensions of rigid connectors set screw type are as indicated in Table 1.



Tabel 1 - Dimensions of rigid connectors set screw type

Catalog Number	Trade Size		Dim A	Dim B
	in.	mm	in.	in.
RSN050	1/2"	16	1.270	1.170
RSN075	3/4"	21	1.380	1.410
RSN100	1"	27	1.590	1.690
RSN125	1-1/4"	35	1.950	2.030
RSN150	1-1/2"	41	2.070	2.290
RSN200	2"	53	2.300	2.760